

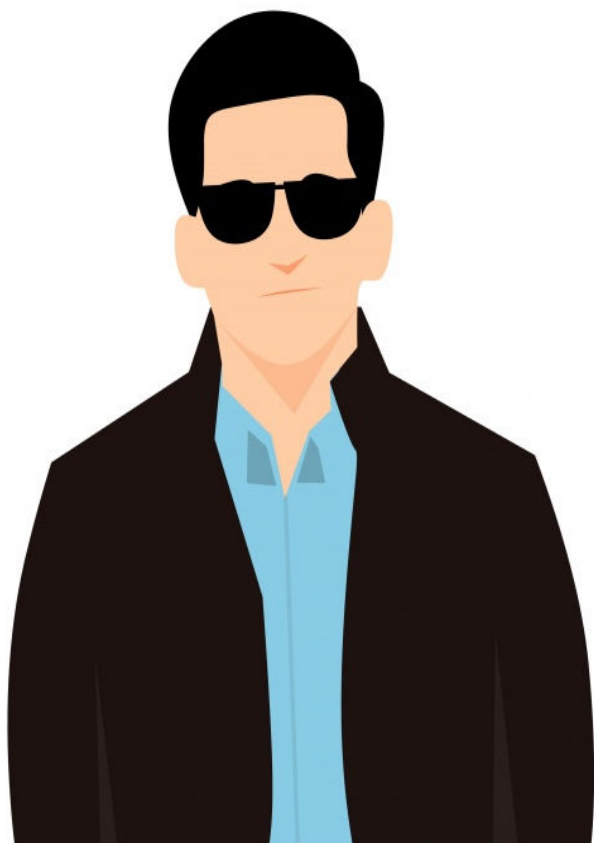


**A.I.M. TO TRUST
IN THE LORD
PROVERBS 3:5-6**

PASTOR NICK LEE

APRIL 16, 2023

About Solomon the Author of Proverbs



We all have Plans and take Path(s) to get there.



Our New Home 2012

A thought on life from my friend William Wang

**"Instead of asking God to
bless our plans. We should
be asking God to plan our
blessings."**

THE THEME OF SUBMISSION IN PROVERBS

**-Paul Tripp from
'The most radical
theme in
Proverbs.'**

The Theme that we want to look at now is maybe one of the places where the book of Proverbs is its most radical, it's most countercultural. We live in a culture where any authority that sets a boundary seems to be repudiated, where we're told that everything is supposed to be okay no matter what you want to do, no matter who wants to do it, and to put strictures on people is some form of bigotry. Proverbs puts before us the importance of a life of submission, a life of submission to higher authority, a life of submission to greater wisdom. Here is how Proverbs begins "Hear, my son, your father's instructions How long will you love being simple? Let your heart keep my commandments; be attentive that you may gain insight. You get this repeated thing: listen, hear, obey, pay attention in the first chapters of Proverbs. The Proverbs says to us. "There is One who sits on the throne of the universe who knows better and who has generously poured His wisdom down on us." But that means the wise life, the good life, the fruitful life, is not a life of independence and self-direction. ... The key to the good life is not independence; the key to the good life is submitting to the wisdom and the authority of God!



Trust in the LORD with all your heart
and lean not on your own understanding;
in all your ways acknowledge him, and
he will make your paths straight.

- Proverbs 3:5-6 -



World's Largest Beach in Long Beach ...



How did I end up here? (Talking about: Plans and Paths).

We can have a
GOOD PLAN
but if we take
the



WRONG PATH
we will find
ourselves in a
place where we
did not expect
to be.

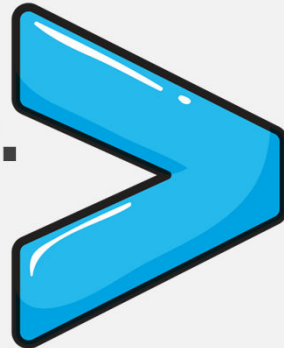
**The PATH
I take
Matters!!**



**2 Paths in
Proverbs
3:5-6 are**

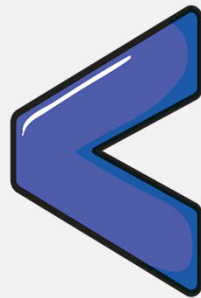
TWO OPPOSING IDEAS

Trust in the LORD.



**Leaning on your own
Understanding.**

Trust in the LORD.



**Leaning on your own
Understanding.**

The World will often tell us:

Trust your gut.
Your gut feelings
are usually accurate
and correct. If you
truly feel there's
something, chances
are *there is*.
Unknown

WWW.LIVELIFEHAPPY.COM



**BELIEVE IN
YOURSELF.**



There is a way that appears right to man but its end is death.

Proverbs 14:12 ESV

God's Way is not always what we understand to be the right way (not according to our understanding).

Choice: Who are we going to trust in ALL our ways?



This Photo by Unknown author is licensed under [CC BY](#)

Trust in the LORD with all your heart
and lean not on your own understanding;
in all your ways acknowledge him, and
he will make your paths straight.

- Proverbs 3:5-6 -



ACKNOWLEDGE
 GOD IS ALL-
 KNOWING AND
 ALL HIS
 WAYS ("WAZE") ARE
 GOOD!

HOW GPS WORKS

1 GPS satellites broadcast radio signals providing their locations, status, and precise time $\{t_1\}$ from on-board atomic clocks.

2 The GPS radio signals travel through space at the speed of light $\{c\}$, more than 299,792 km/second.

3 A GPS device receives the radio signals, noting their exact time of arrival $\{t_2\}$, and uses these to calculate its distance from each satellite in view.

4 Once a GPS device knows its distance from at least four satellites, it can use geometry to determine its location on Earth in three dimensions.

GPS
 IS A CONSTELLATION OF 24 OR MORE SATELLITES FLYING 20,350 KM ABOVE THE SURFACE OF THE EARTH. EACH ONE CIRCLES THE PLANET TWICE A DAY IN ONE OF SIX ORBITS TO PROVIDE CONTINUOUS, WORLDWIDE COVERAGE.

To calculate its distance from a satellite, a GPS device applies this formula to the satellite's signal:
distance = rate x time
 where **rate** is $\{c\}$ and **time** is how long the signal traveled through space.

The signal's travel time is the difference between the time broadcast by the satellite $\{t_1\}$ and the time the signal is received $\{t_2\}$.

The GPS Master Control Station tracks the satellites via a global monitoring network and manages their health on a daily basis.

Ground antennas around the world send data updates and operational commands to the satellites.

The Air Force launches new satellites to replace aging ones when needed. The new satellites offer upgraded accuracy and reliability.

How does GPS help farmers? Learn more about the Global Positioning System and its many applications at WWW.GPS.GOV

This poster is a product of the National Coordination Office for Space-Based Positioning, Navigation and Timing, an official body of the United States Government. Student design courtesy of U.S.A.

**INVITE GOD IN AND
ACKNOWLEDGE HIS
OMNIPRESENCE!**



Exodus 33

God Promises an Angel to go with the people to destroy their enemies and fulfill His Covenant Promise.

33 The LORD said to Moses, "Depart; go up from here, you and the people whom you have brought up out of the land of Egypt, to the land of which I swore to Abraham, Isaac, and Jacob, saying, 'To your offspring I will give it.' ² I will send an angel before you, and I will drive out the Canaanites, the Amorites, the Hittites, the Perizzites, the Hivites, and the Jebusites. ³ Go up to a land flowing with milk and honey; but I will not go up among you, lest I consume you on the way, for you are a stiff-necked people."

Moses Refuses to Go unless God goes with them!

¹⁴ And he said, "My presence will go with you, and I will give you rest." ¹⁵ And he said to him, "If your presence will not go with me, do not bring us up from here."



**MOVE WITH GOD
AND TRUST GOD'S
OMNIPOTENCE!**

